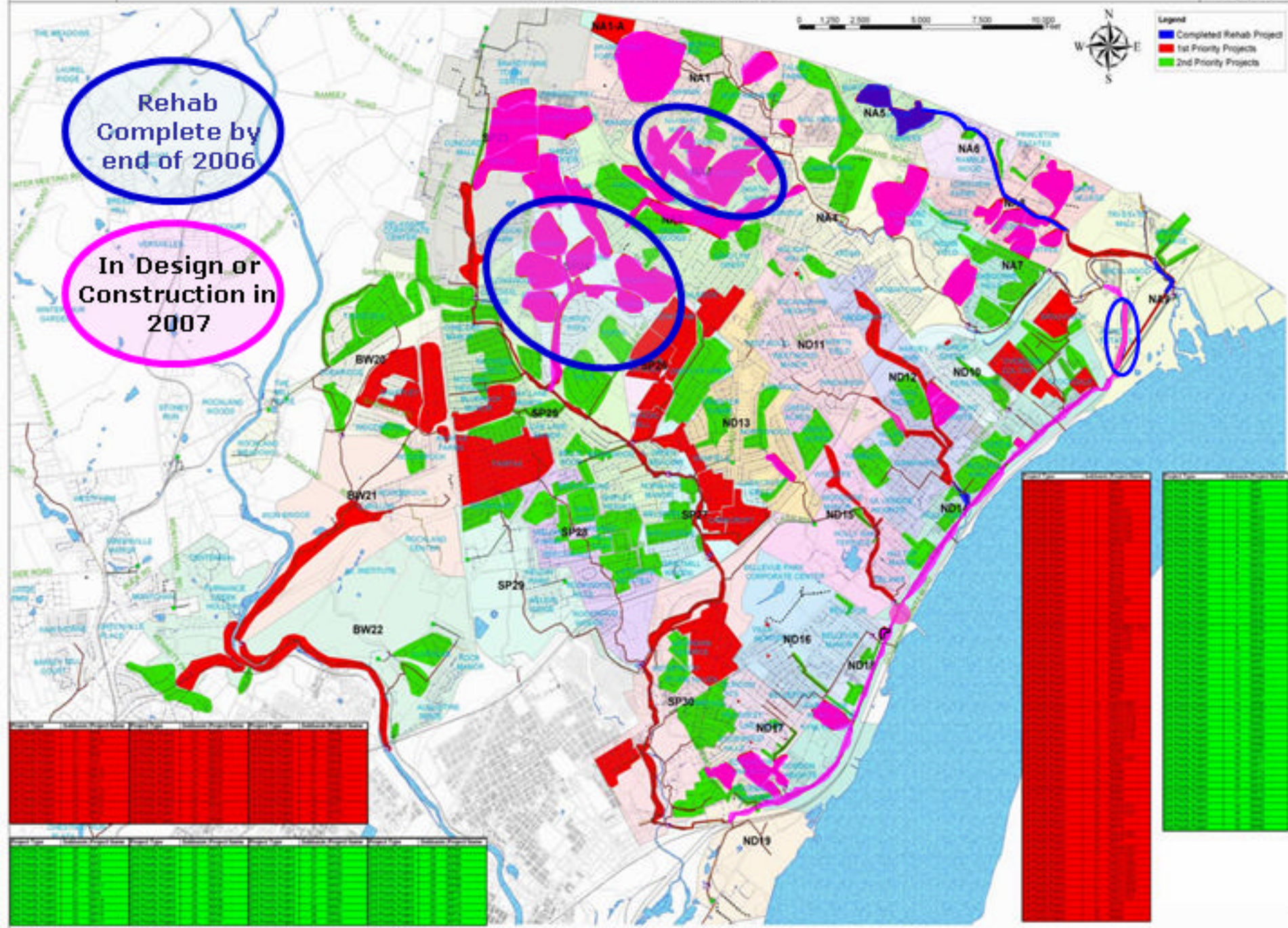


NORTH AND SOUTH BRANDYWINE HUNDRED, NEW CASTLE COUNTY, DELAWARE REHABILITATION PROJECTS

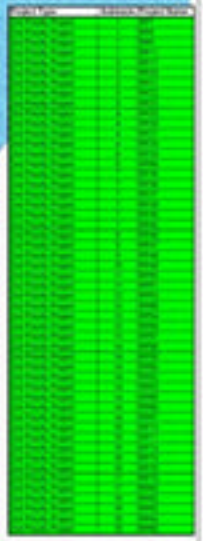
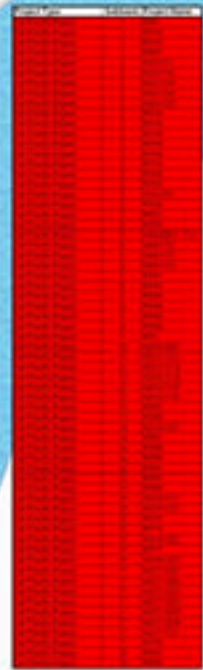
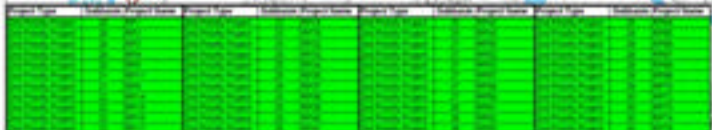
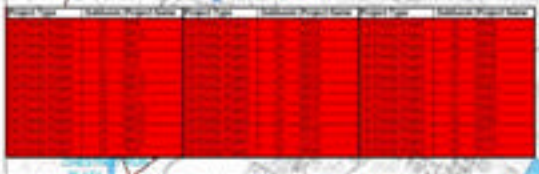


Rehab
Complete by
end of 2006

In Design or
Construction in
2007

Legend
■ Completed Rehab Project
■ 1st Priority Projects
■ 2nd Priority Projects

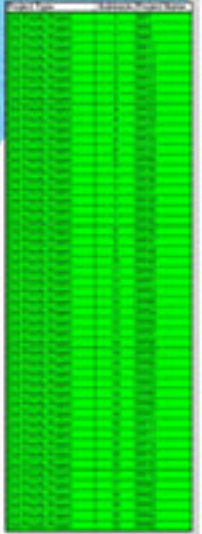
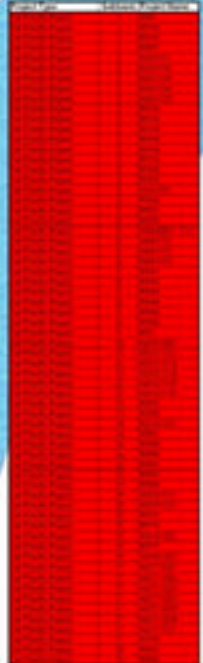
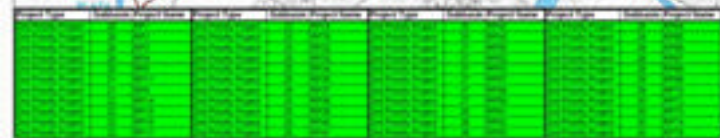
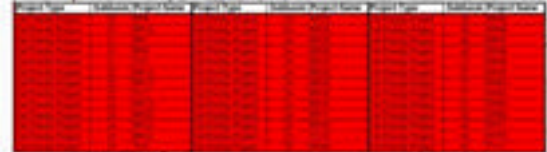
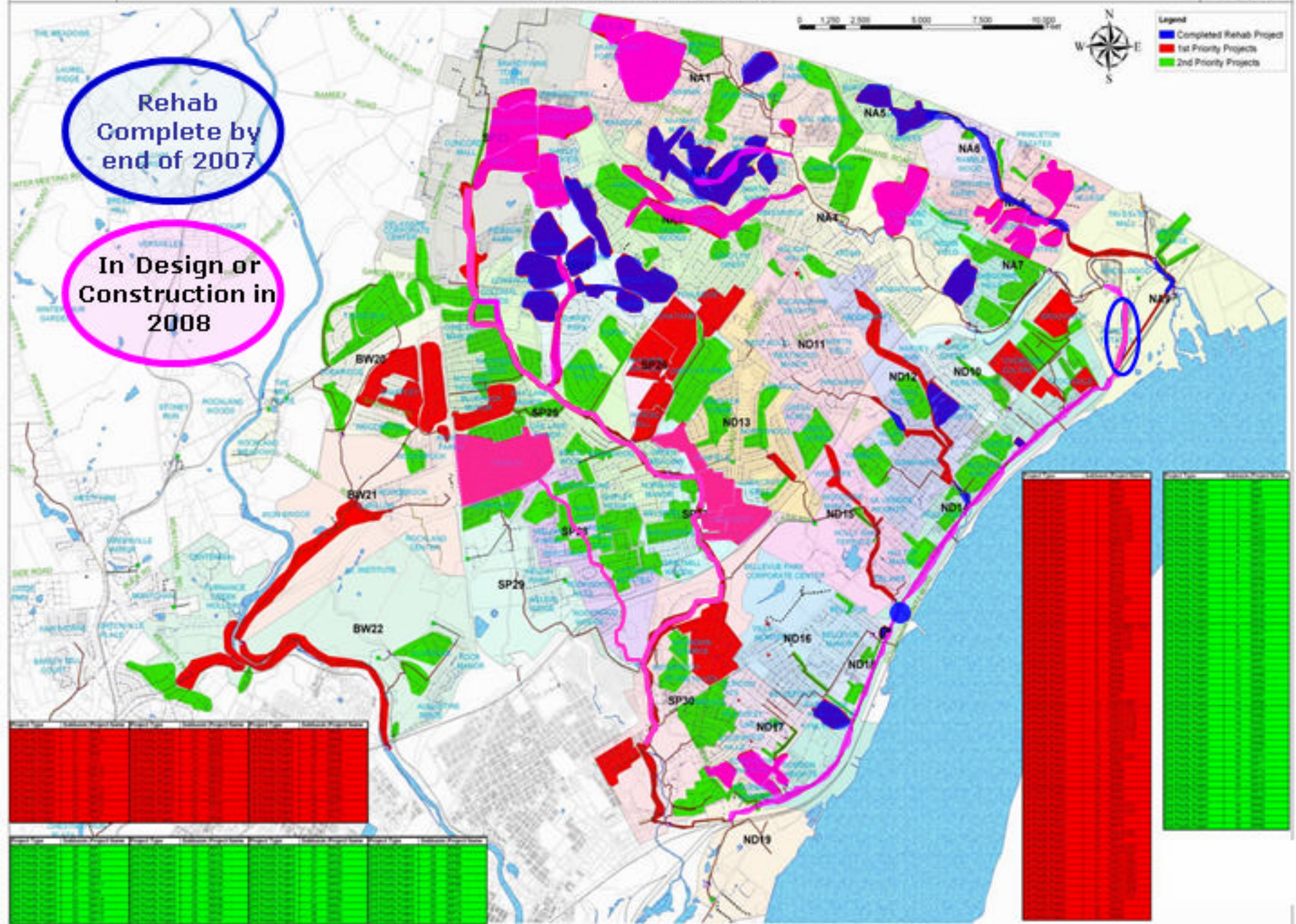
0 1,000 2,000 3,000 4,000 5,000 6,000 7,000 8,000 9,000 10,000 Feet



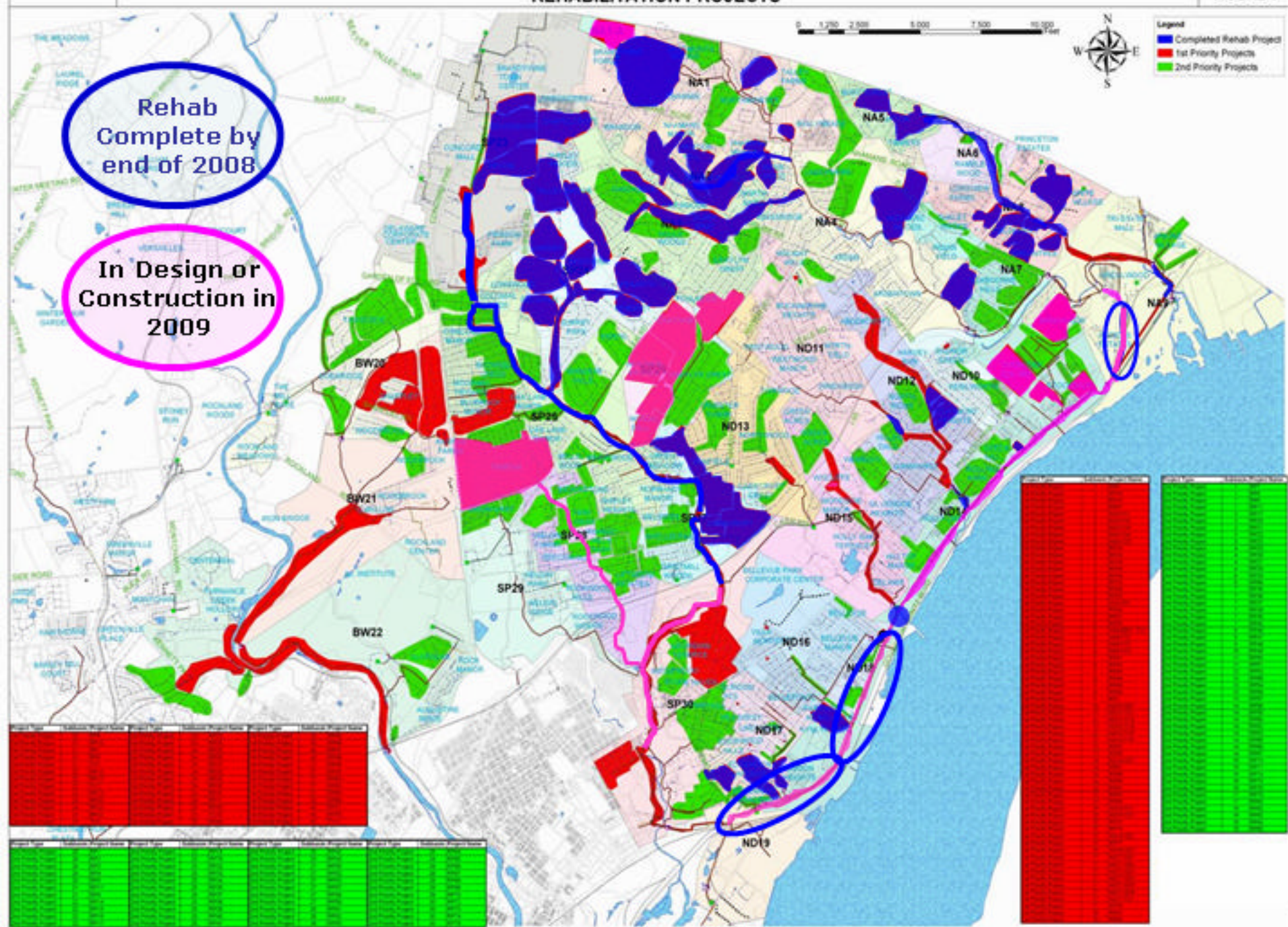
NORTH AND SOUTH BRANDYWINE HUNDRED, NEW CASTLE COUNTY, DELAWARE REHABILITATION PROJECTS

Rehab
Complete by
end of 2007

In Design or
Construction in
2008



NORTH AND SOUTH BRANDYWINE HUNDRED, NEW CASTLE COUNTY, DELAWARE REHABILITATION PROJECTS



NORTH AND SOUTH BRANDYWINE HUNDRED, NEW CASTLE COUNTY, DELAWARE REHABILITATION PROJECTS

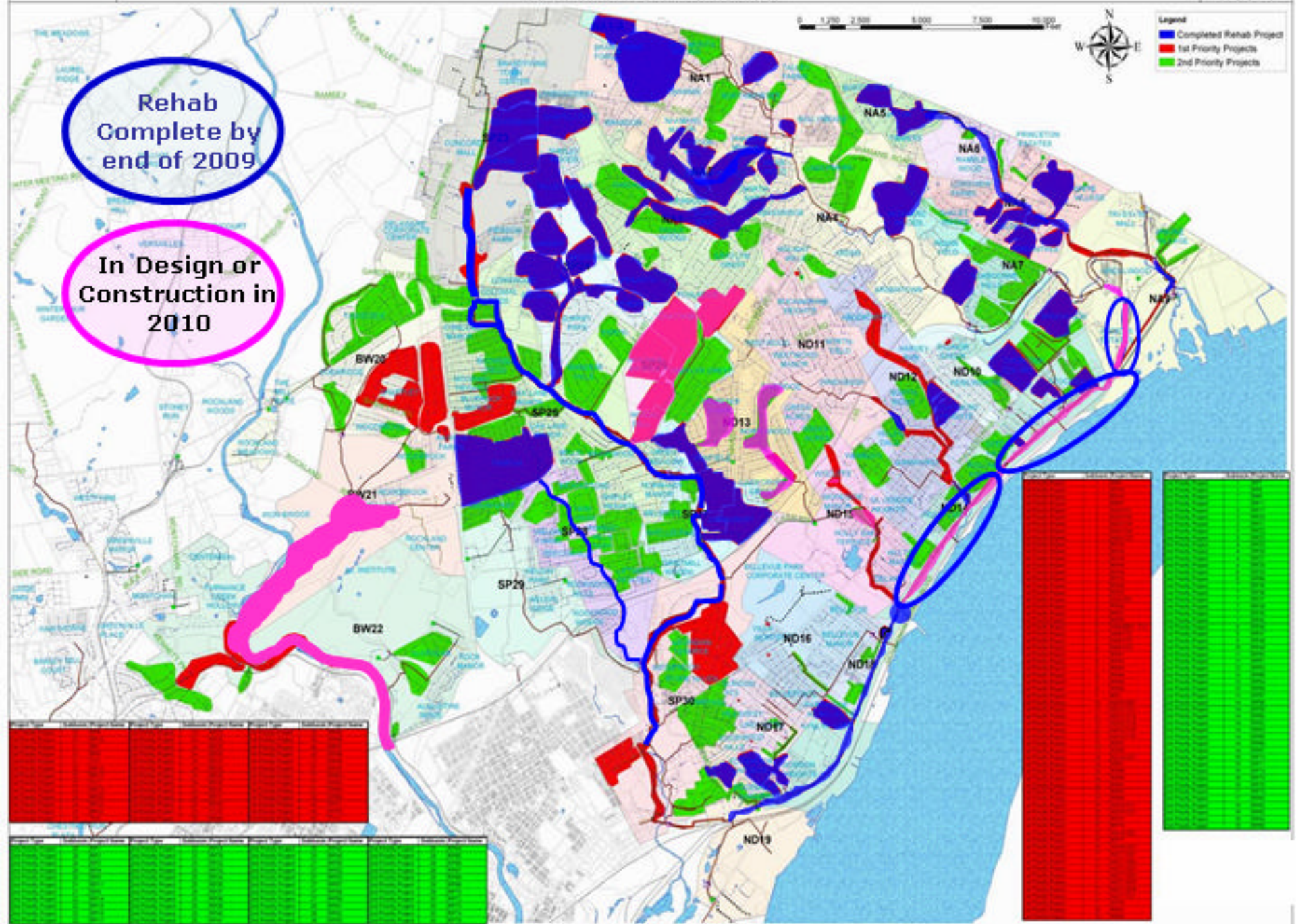
Rehab
Complete by
end of 2009

In Design or
Construction in
2010

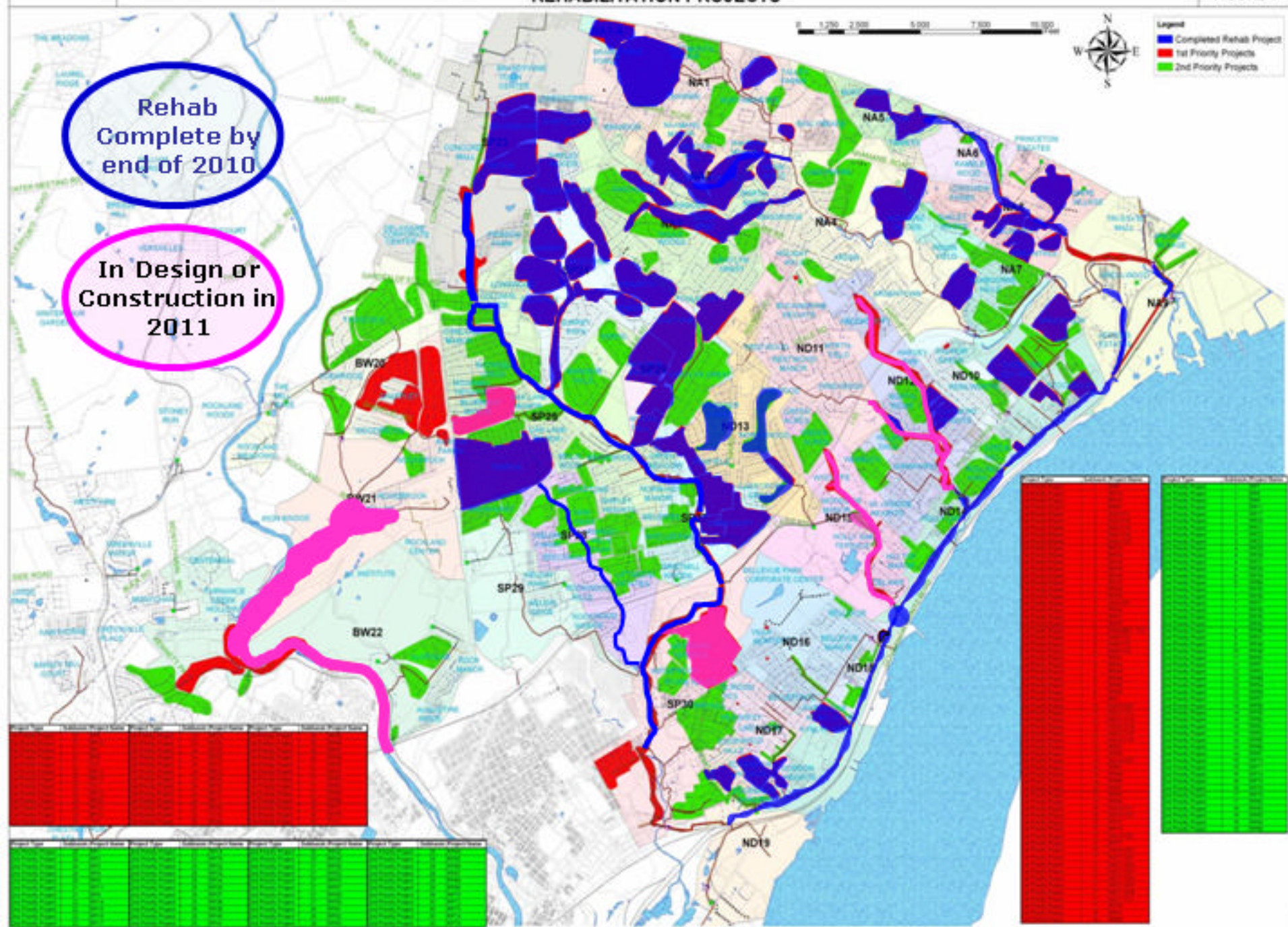


Legend

- Completed Rehab Project
- 1st Priority Projects
- 2nd Priority Projects



NORTH AND SOUTH BRANDYWINE HUNDRED, NEW CASTLE COUNTY, DELAWARE REHABILITATION PROJECTS

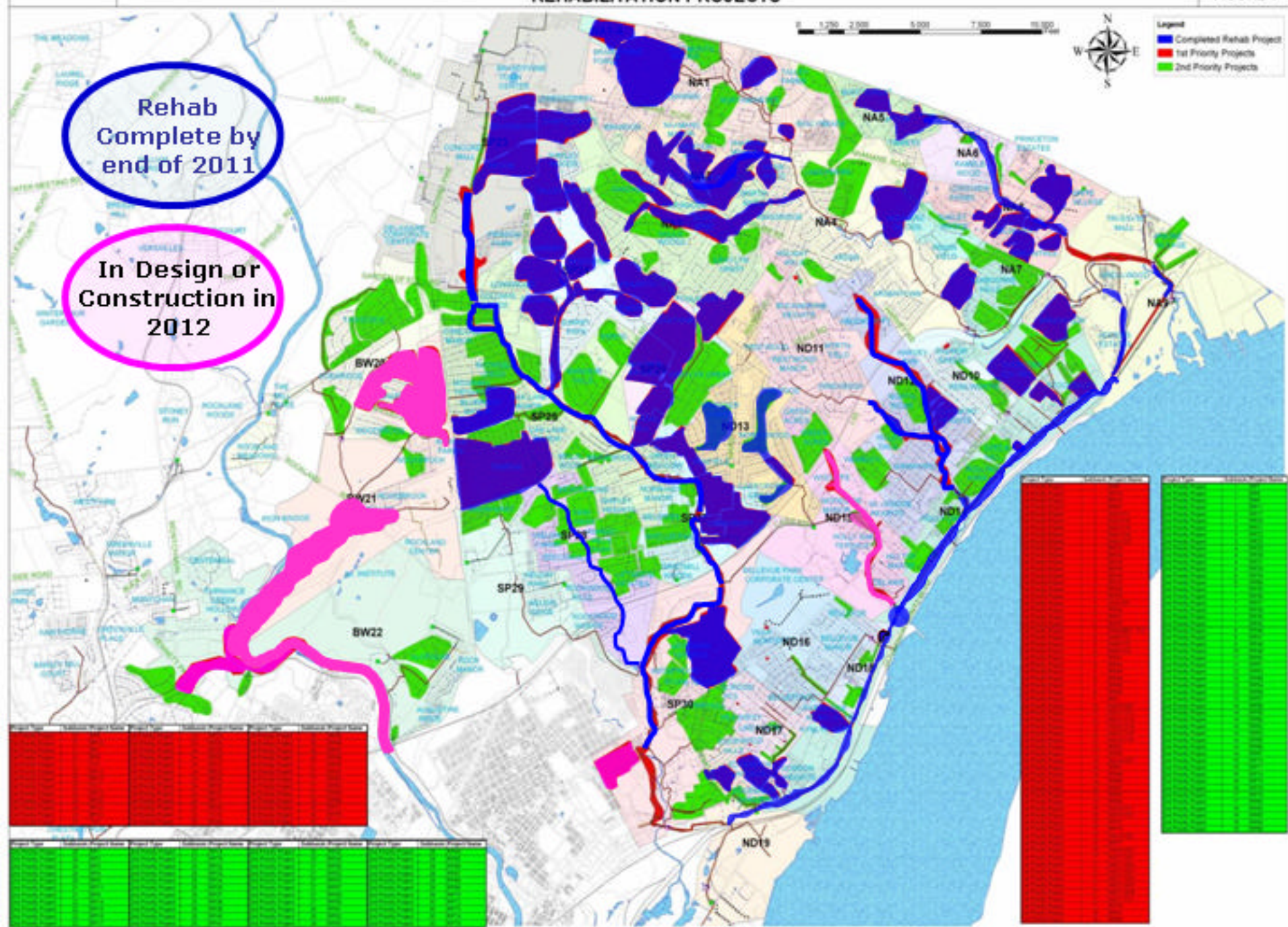


Rehab Complete by end of 2010

In Design or Construction in 2011

- Completed Rehab Project
- 1st Priority Projects
- 2nd Priority Projects

NORTH AND SOUTH BRANDYWINE HUNDRED, NEW CASTLE COUNTY, DELAWARE REHABILITATION PROJECTS



Rehab Complete by end of 2011

In Design or Construction in 2012

NORTH AND SOUTH BRANDYWINE HUNDRED, NEW CASTLE COUNTY, DELAWARE REHABILITATION PROJECTS

MALCOLM PIRNIE, INC.
FIGURE 1

