

SEE SHEET 3

APPLICATION NO. 2008-0275-S
 PRELIMINARY
 MAJOR LAND DEVELOPMENT PLAN
BARLEY MILL PLAZA
 CHRISTIANA HUNDRED NEW CASTLE COUNTY DELAWARE

APEX ENGINEERING INCORPORATED
 27 W. MARKET STREET NEWPORT, DELAWARE 19804
 (302) 994-1900 (302) 994-9099 FAX

SCALE 1" = 50'	DATE 1/14/11	SHEET NO. 2
SURVEYED BY	DRAWN BY J.E.C./F.S.	OF 7
MICROFILM NO.	CHECKED BY S.G.D.	REVISION

PROJECT / FILE NUMBER
07205000 PLOTPRE

The professional services of Apex Engineering Incorporated were undertaken for and performed in the interest of our client. No contractual obligation is assumed by Apex Engineering Incorporated for the benefit of any other entity. This document is owned by Apex Engineering Incorporated, and it shall not be reused without our written permission. All copyrights are reserved by Apex Engineering Incorporated.

REV	DATE	COMMENTS	CREATED

SEE SHEET 2

KEY MAP **SCALE: 1"=1200'**



SEE SHEET 4

APPLICATION NO. 2008-0275-S
PRELIMINARY
MAJOR LAND DEVELOPMENT PLAN
BARLEY MILL PLAZA
 CHRISTIANA HUNDRED NEW CASTLE COUNTY DELAWARE

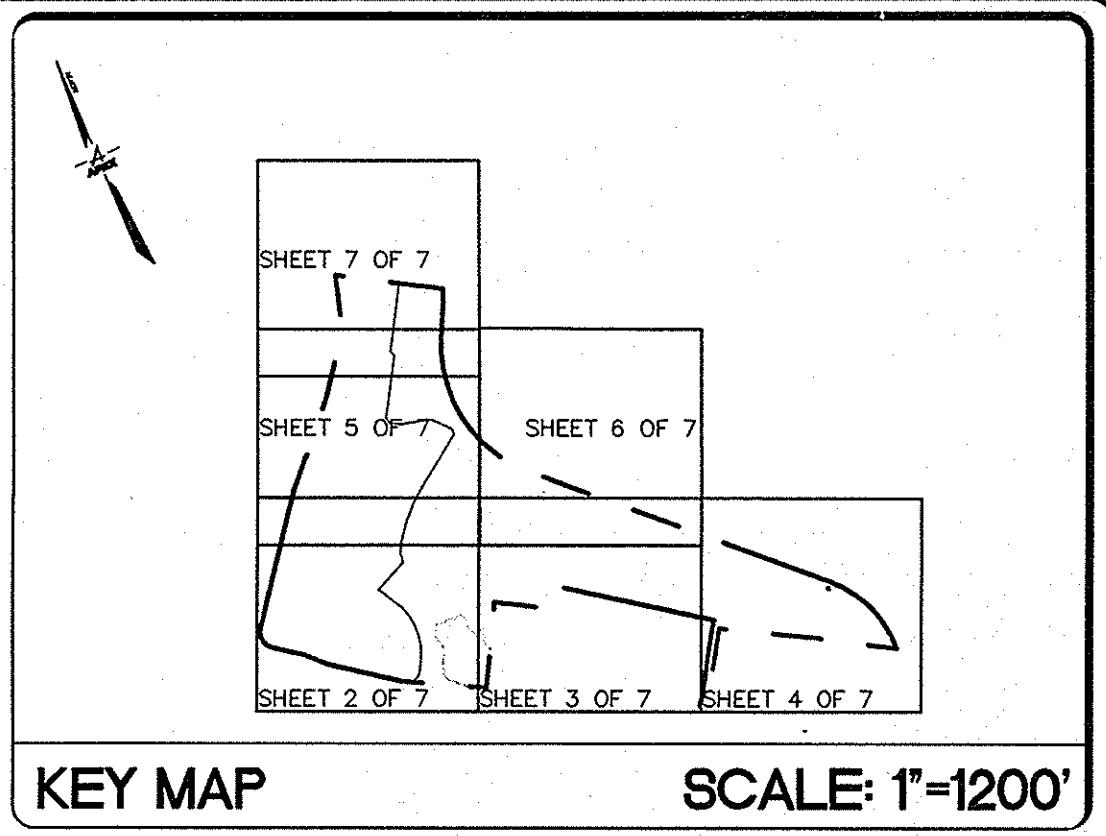
APEX ENGINEERING INCORPORATED
 27 W. MARKET STREET NEWPORT, DELAWARE 19804
 (302) 994-1900 (302) 994-9099 FAX

SCALE: 1" = 50'

SURVEYED BY:	DATE:	SHEET NO. 3 OF 7
DRAWN BY:	1/14/11	
CHECKED BY:	J.E.C./F.S.	
S.G.D.		
PROJECT / FILE NUMBER	REVISION	
07205000 PLOTPRE		

REV.	DATE	COMMENT	CHECKED

The professional services of Apex Engineering Incorporated were undertaken for and performed in the interest of our client. No contractual obligation is assumed by Apex Engineering Incorporated for the benefit of any other entity. This document is owned by Apex Engineering Incorporated, and it shall not be reused without our written permission. All copyrights are reserved by Apex Engineering Incorporated. © 2009



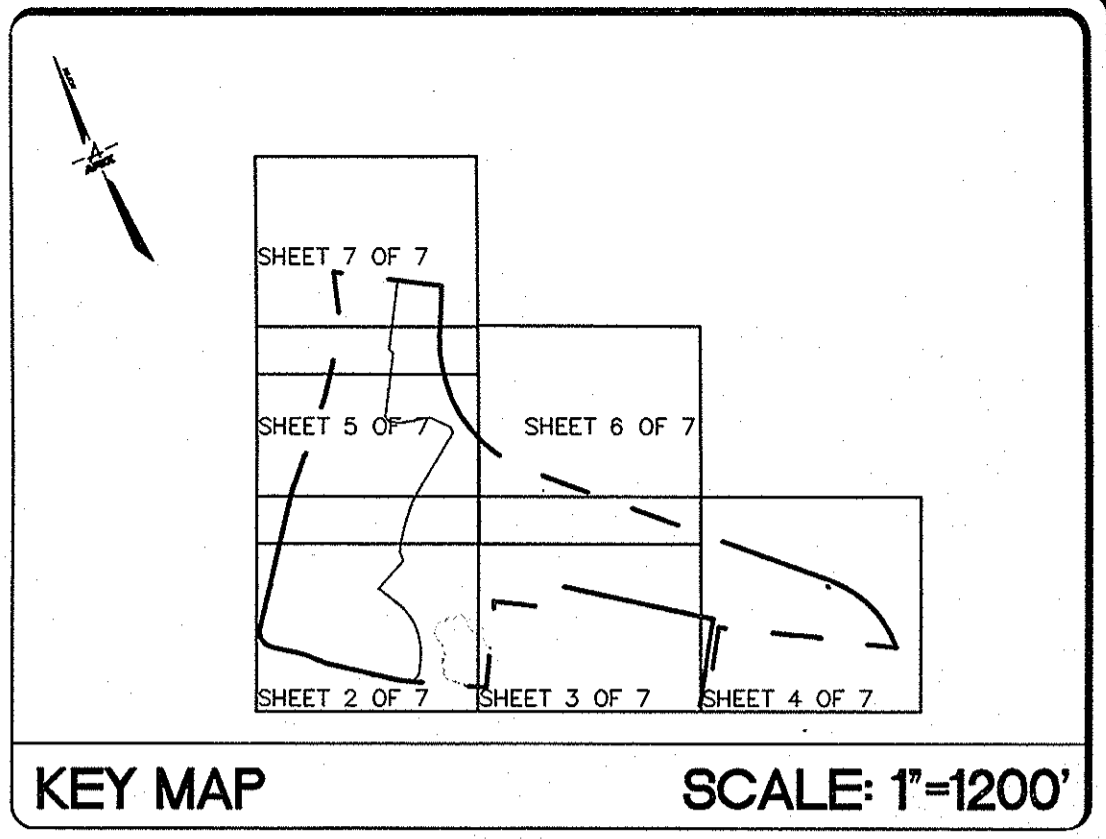
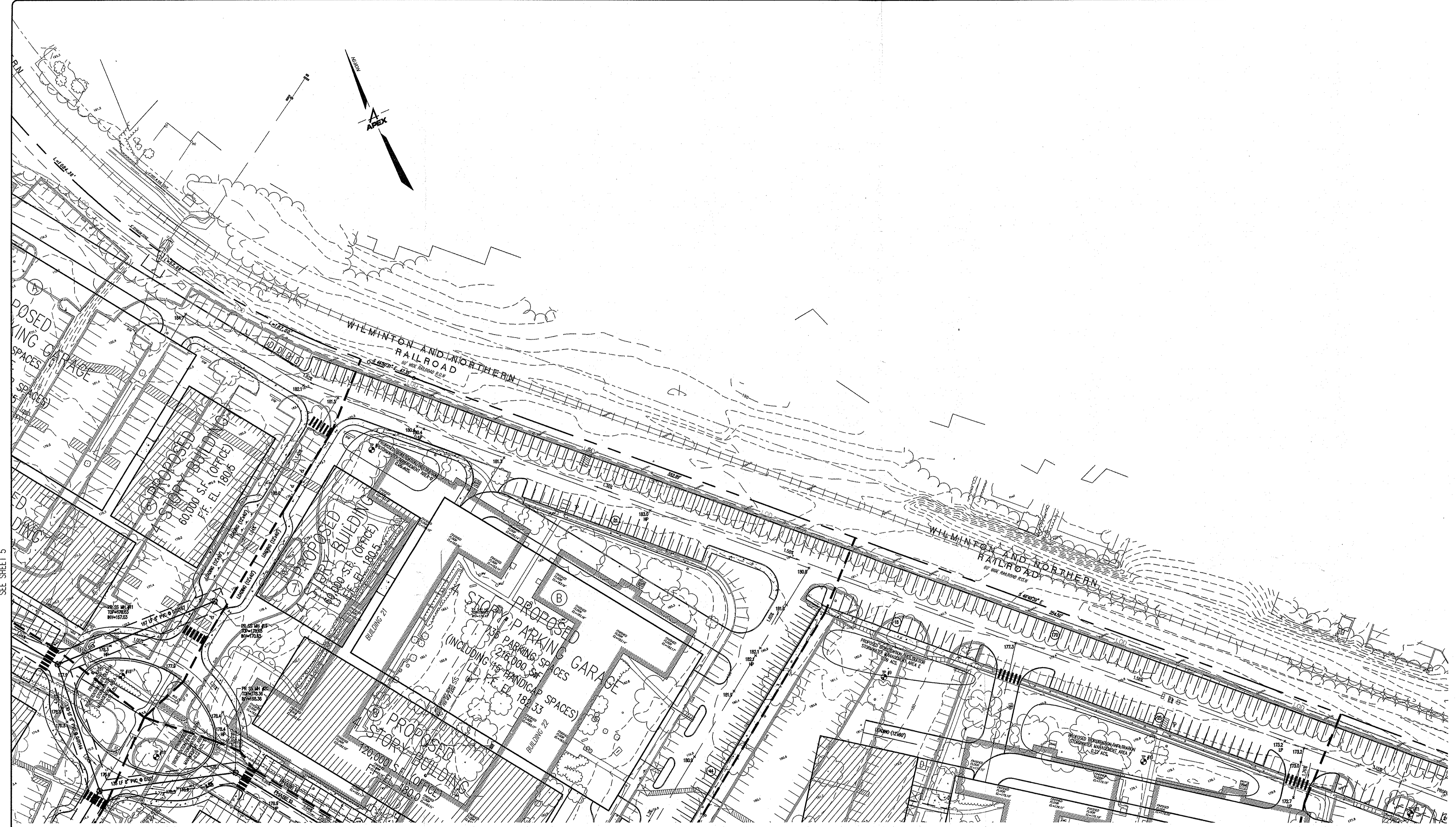
APPLICATION NO. 2008-0275-S
 PRELIMINARY
 MAJOR LAND DEVELOPMENT PLAN
BARLEY MILL PLAZA
 CHRISTIANA HUNDRED NEW CASTLE COUNTY DELAWARE

APEX ENGINEERING INCORPORATED
 27 W. MARKET STREET NEWPORT, DELAWARE 19804
 (302) 994-1900 (302) 994-9099 FAX

SCALE 1" = 50'		DATE 1/14/11	SHEET NO. 4
SURVEYED BY:		DRAWN BY: J.E.C./F.S.	
MICROFILM NO.		CHECKED BY: S.G.D.	
PROJECT / FILE NUMBER 07205000 PLOTPRE			REVISION

REV.	DATE	COMMENT	CHECKED

The professional services of Apex Engineering Incorporated were undertaken for and performed in the interest of our client. No contractual obligation is assumed by Apex Engineering Incorporated for the benefit of any other entity. This document is owned by Apex Engineering Incorporated, and it shall not be reused without our written permission. All copyrights are reserved by Apex Engineering Incorporated.



SEE SHEET 5

SEE SHEET 3

APPLICATION NO. 2008-0275-S
 PRELIMINARY
 MAJOR LAND DEVELOPMENT PLAN
BARLEY MILL PLAZA
 CHRISTIANA HUNDRED NEW CASTLE COUNTY DELAWARE

APEX ENGINEERING INCORPORATED
 27 W. MARKET STREET NEWPORT, DELAWARE 19804
 (302) 994-1900 (302) 994-9099 FAX



SCALE 1" = 50'	DATE 1/14/11	SHEET NO. 6 OF 7
SURVEYED BY	DRAWN BY J.E.C./F.S.	
MICROFILM NO.	CHECKED BY S.G.D.	
PROJECT / FILE NUMBER 07205000 PLOTPRE		

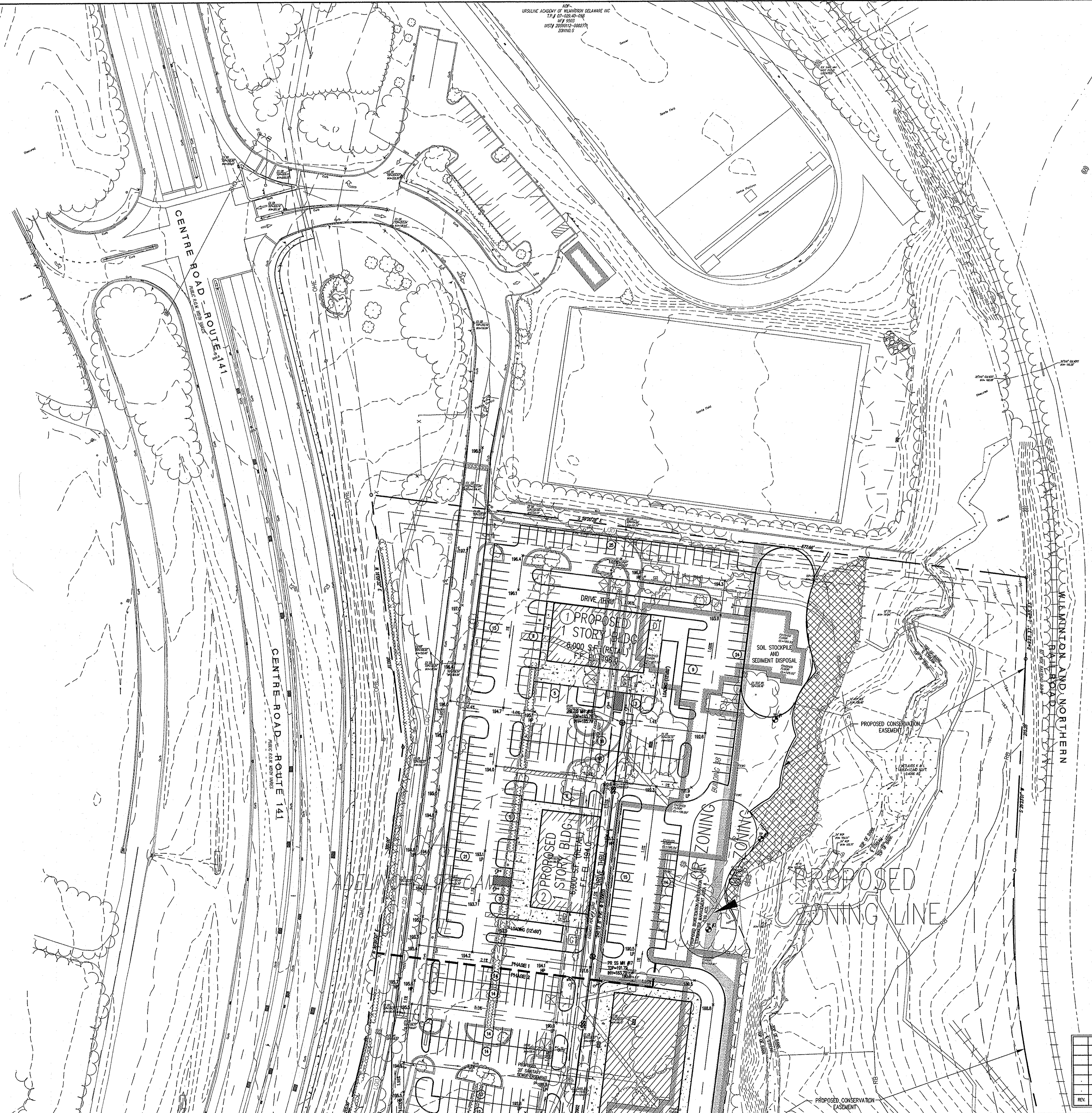
REV.	DATE	COMMIT	CHECKED

The professional services of Apex Engineering Incorporated were undertaken for and performed in the interest of our client. No contractual obligation is assumed by Apex Engineering Incorporated for the benefit of any other entity. This document is owned by Apex Engineering Incorporated, and it shall not be reused without our written permission. All copyrights are reserved by Apex Engineering Incorporated. © 2009

OF
 URSINE ACADEMY OF NEWBORN DELAWARE INC
 T.P.# 07-005-00-000
 1/17/2008
 1074 2008012-000277
 200805



KEY MAP SCALE: 1"=1200'



APPLICATION NO. 2008-0275-S
 PRELIMINARY
 MAJOR LAND DEVELOPMENT PLAN
BARLEY MILL PLAZA
 CHRISTIANA HUNDRED NEW CASTLE COUNTY DELAWARE

APEX ENGINEERING INCORPORATED
 27 W. MARKET STREET NEWPORT, DELAWARE 19804
 (302) 994-1900 (302) 994-9099 FAX



SCALE 1" = 50'	DATE 1/14/11	SHEET NO. 7
SURVEYED BY: J.E.C./F.S.	DRAWN BY: J.E.C./F.S.	OF 7
MICROFILM NO.	CHECKED BY: S.G.D.	REVISION
PROJECT / FILE NUMBER 07205000 PLOTPRE		

REV.	DATE	COMMENT	CHECKED

The professional services of Apex Engineering Incorporated were undertaken for and performed in the interest of our client. No contractual obligation is assumed by Apex Engineering Incorporated for the benefit of any other entity. This document is owned by Apex Engineering Incorporated, and it shall not be reused without our written permission. All copyrights are reserved by Apex Engineering Incorporated. © 2009